

# BS Computer Science Online

## Roadmap

### Fall 2026 Start, Full-Time

#### YEAR ONE

**FAL  
26**

**Session 1 (8 weeks)**

- COMP 232 Programming Languages (core) 3 units
- MATH 352 Probability & Stats (core) 3 units

**Session 2 (8 weeks)**

- COMP 262 Computer Organization & Architecture (core) 3 units
- MATH 240 Linear Algebra (core) 3 units

**SPR  
27**

**Session 1 (8 weeks)**

- COMP 350 Software Engineering (core) 3 units
- MATH 354 Analysis of Algorithms (core) 3 units

**Session 2 (8 weeks)**

- COMP 454 Automata, Languages, & Computation (core) 3 units
- COMP (elective) 3 units

**SUM 27**

**NOTE: Summer session is 12 weeks long. Electives taken as needed.**

- COMP 362 Operating Systems (core) 4 units
- UDGE 3 Arts and Humanities (UDGE) 3 units

#### YEAR TWO

**FAL  
27**

**Session 1 (8 weeks)**

- COMP 447 Societal Issues in Computing (core) 3 units
- COMP 345 Digital Image Processing (core) 3 units
- COMP 497 Directed Study (core) 1 unit

**Session 2 (8 weeks)**

- UDGE 4 Social & Behavioral Sciences (UDGE/elective) 3 units
- UDGE 2 Mathematics or Physical/Biological Sciences (UDGE/elective) 3 units
- COMP (elective) 3 units

**SPR  
28**

**Session 1 (8 weeks)**

- COMP 491 Capstone Prep (core) 1 unit
- COMP (elective) 3 units
- TBD (elective) 3 units

**Session 2 (8 weeks)**

- COMP 499 Capstone (core) 3 units
- COMP (elective) 3 units
- TBD (elective) 3 units (EX: COMP 424, 469, 478, 490, 497)

**SUM 28**

**NOTE: Summer session is 12 weeks long. Electives taken as needed.**

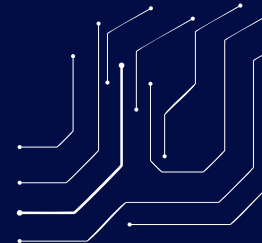
- TBD (free elective if needed) 3 units
- TBD (free elective if needed) 3 units

NOTE: The language requirement area and American Institutions area are requirements that must be completed for graduation. If not already completed you will need to complete these requirements at the community college of your choice. Please review your CI Degree Progress Report (DPP), through myCI and selecting CI Records, to evaluate what requirements have been met, are in progress, or missing, or contact your program advisor.

# BS Computer Science Online

## Roadmap

### Fall 2026 Start, Full-Time



#### Contacts

**Program Chair**, Dr. Mary Adler - marion.adler@csuci.edu

**Program Director**, Dr. Brian Thoms - brian.thoms@csuci.edu

**Extended University Specialist**, Jasmine Moreno - jasmine.moreno@csuci.edu

**Student Finance Specialist**, Crista Fisher - crista.fisher@csuci.edu

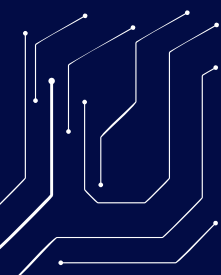
**Financial Aid Counselor**, Joanna Rivas - joanna.rivas@csuci.edu

**Lower Division GE Advising** - ext.ge@csuci.edu

#### Resources

EU Current Students Page & Resources	<a href="https://ext.csuci.edu/current-students/index.htm">https://ext.csuci.edu/current-students/index.htm</a>
EU New Student Orientation Course	<a href="https://cilearn.csuci.edu/courses/1954">https://cilearn.csuci.edu/courses/1954</a>
GPA Calculator	<a href="https://ciapps.csuci.edu/gpacalculator/">https://ciapps.csuci.edu/gpacalculator/</a>
CI Academics Requirements Report (CARR)	<a href="https://www.csuci.edu/registrar/carr.htm">https://www.csuci.edu/registrar/carr.htm</a>
Financial Aid	<a href="https://ext.csuci.edu/admissions/financial-aid.htm">https://ext.csuci.edu/admissions/financial-aid.htm</a>

**NOTE:** Students who do NOT transfer a total of 70 units over when admitted will need to complete courses marked "if needed" to meet the 120 unit completion graduation requirement. Please review your Degree Progress Report (DPP) for all transferred credit and unit count and connect with your program advisor for more assistance.



Chat with Mahi-Bot!  
 CSU Channel Islands Extended University's 24/7  
 AI chatbot, here to assist you with enrollment,  
 program information, and student resources.

[ext@csuci.edu](mailto:ext@csuci.edu)



**EXTENDED UNIVERSITY**  
 CHANNEL ISLANDS