

Master of Science **COMPUTER SCIENCE**

Prepare for a career in high-tech, computer and internet-driven industries and businesses



Channel Islands
CALIFORNIA STATE UNIVERSITY

CHANNEL YOUR POTENTIAL

The MS Computer Science degree program

California State University Channel Islands, Master of Science in Computer Science provides students education in computer theory and practical application. The program prepares students for careers in high-tech, computer and internet-driven industries and businesses. The faculty are interdisciplinary, dynamic and innovative professionals trained in latest technologies such as cloud computing, algorithms, robotics, data analysis, cyber security, and artificial intelligence. Students are given a strong background in Computer Science and Mathematics, as well as practical skills necessary to develop industrial-grade systems as well as to conduct independent applied and theoretical research.

Designed with working professionals in mind, classes are offered during evenings based on schedule availability.

Gain necessary skills to develop industrial-grade systems



Channel Islands

CALIFORNIA STATE UNIVERSITY



The MS Computer Science Curriculum

Total Units: 32*

Graduate Seminar 2 units

Master Thesis 6+ units

Electives 24 units

*Foundational courses in Computer Science or Mathematics may also be required.

COMP 599 - Graduate Seminar (2 units)

COMP 597 - Thesis (6+ units)

Advanced, Practical, Innovative



Channel Islands

CALIFORNIA STATE UNIVERSITY



Electives

COMP 510 - Advanced Image Analysis Techniques (PHYS) (3 units)
COMP 520 - Advanced Database Systems (3 units)
COMP 524 - Security (3 units)
COMP 529 - Cloud Computing (3 units)
COMP 546 - Pattern Recognition (PHYS) (3 units)
COMP 549 - Human-Computer Interaction (3 units)
COMP 550 - Advanced Software Engineering (3 units)
COMP 554 - Algorithms (MATH) (3 units)
COMP 566 - Geometry and Computer Graphics (3 units)
COMP 569 - Artificial Intelligence (3 units)
COMP 571 - Biologically Inspired Computing (3 units)
COMP 572 - Neural Networks (3 units)
COMP 575 - Multi-agent Systems (3 units)
COMP 578 - Data Mining (3 units)
COMP 581 - Mathematical Methods in Artificial Intelligence (3 units)
COMP 590 - Special Topics in Computer Science (3 units)



Your Future Within Reach

Fees

CSU Application Fee: \$70 (non-refundable)

Course Fee per 1 credit unit: \$525

32 units x cost per unit: \$16,800

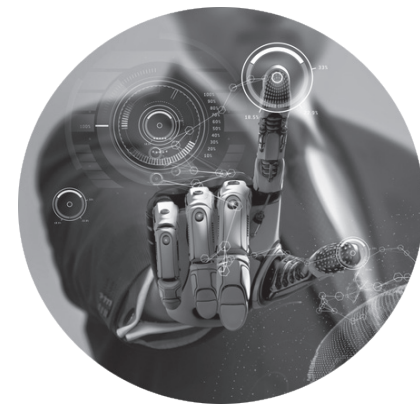
*In-state, out-of-state, and International students. Fees do not include the cost of textbooks or living expenses, and are subject to change at any time. Financial aid in the form of loans may be available for eligible students.

Admissions

Application periods: please refer to our website for up-coming deadlines and start dates: ext.csuci.edu/programs/ms-computer-science/index.htm

Speaking with a program representative is the first step in the admission process. We will provide you with all of the information needed, including a preliminary evaluation of transcripts and work experience, to help you make a decision and move ahead.

BS or BA degree in Computer Science is preferred. Candidates with undergraduate degrees from other disciplines considered on a case-by-case basis and may be conditionally accepted. Conditions may include successful completion of one or more of the following foundational/remedial Computer Science and Mathematics courses as determined by the admission committee: ➡



List of required foundation courses for non-computer science majors, these courses may be taken at CSUCI through Open University. They are not part of the master's degree program.

COMP 150 - Introduction to Programming

COMP 151 - Data Structures and Algorithms

COMP 162 - Computer System Architecture and Assembly Languages

COMP 232 - Programming Languages

COMP 350 - Software Engineering

COMP 354 - Algorithms

COMP 362 - Operating Systems

MATH 150 - Calculus I

MATH 151 - Calculus II

MATH 230 - Logic and Mathematical Reasoning

MATH 240 - Linear Algebra

MATH 300 - Discrete Math

MATH 352 - Probability and Statistics

GRE score not required

Apply online at www2.calstate.edu/apply

Required application documents:

Two letters of recommendation

One page statement of purpose

One set of official transcripts from all colleges attended, minimum GPA requirement is 2.75

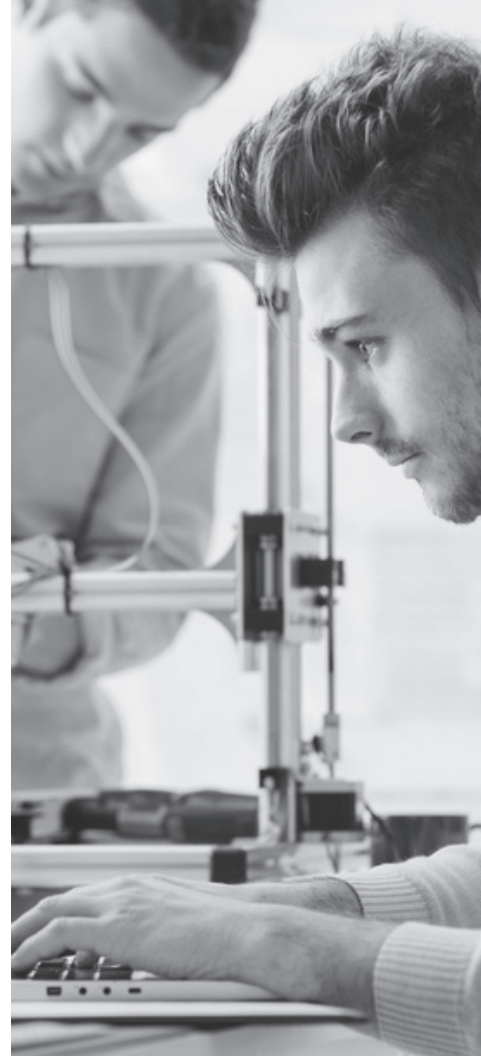
Resume or *Curriculum Vitae*

Contact a recruiter for assistance.



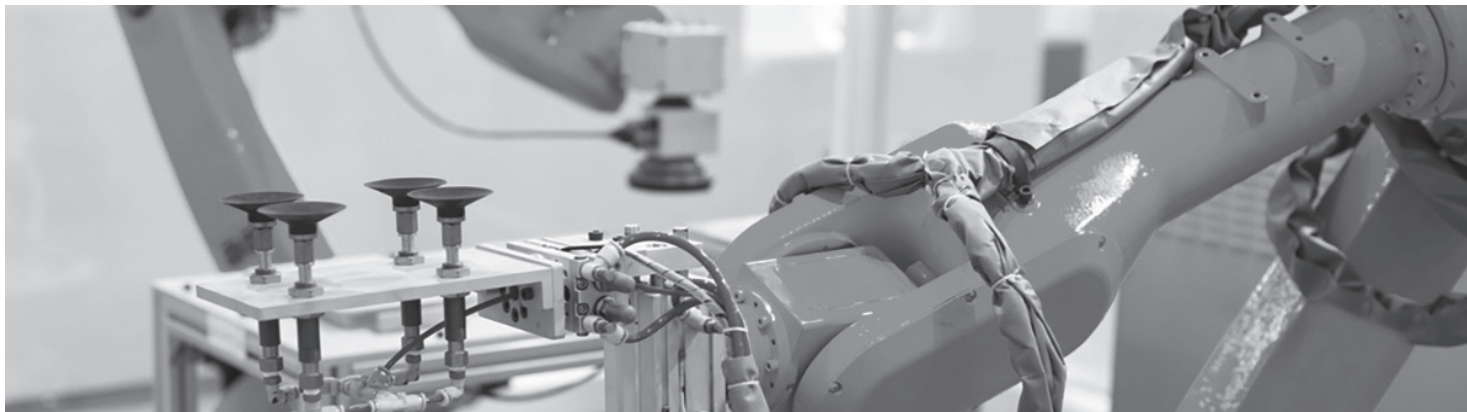
Channel Islands

CALIFORNIA STATE UNIVERSITY



International Applicants

Please visit the International Admissions page at csuci.edu/international/admissions/index.htm. A TOEFL score is required for international applicants and for those with degrees from foreign universities.



“Small class sizes provide very good exposure to the subject matter and personal attention from professors. The training I received for research-oriented study and critical thinking was valuable for my future endeavors and for every aspect of my life.”

Dhruv Pandey

MS Computer Science

Class of 2017

2016 CSU Edison Scholarship Recipient

Contact

CSU Channel Islands Extended University
805-437-2748 x4
One University Drive
Sage Hall 2109
Camarillo, CA 93012

Attend an information session:
go.csuci.edu/learnmore

